

Pressure Control Valve

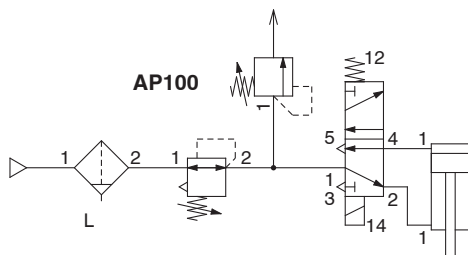
AP100

Pressure greater than the set pressure is released into the atmosphere, which allows pressure in the pipe to be maintained.



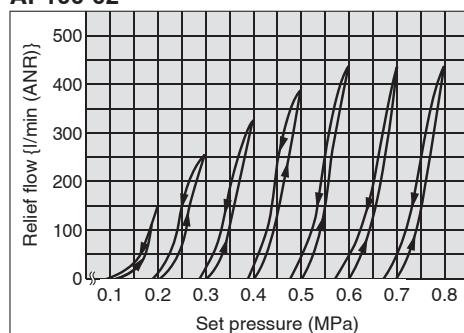
Application Example

Cylinder cushion



Relief Characteristics

AP100-02



Note) The graph above shows the relief flow when the set pressure rises and falls from 0.1 MPa.

Standard Specifications

Model	AP100
Port size	1/8, 1/4
Fluid	Air
Proof pressure	1.5 MPa
Max. operating pressure	1.0 MPa
Set pressure range	0.05 to 0.69 MPa
Ambient and fluid temperature	-5 to 60 °C (No freezing)
Bracket	part no.: B21-1P
Weight (kg)	0.12

How to Order

AP100 — **01** —

- Pressure control valve**
- Thread type**

Symbol	Type
—	Rc
N	NPT
F	G
- Connection thread**

Symbol	Size
01	1/8
02	1/4
- Special specifications**

Symbol	Specifications
—	—
X201	Set pressure range 0.02 to 0.2 MPa
- Accessory**

Symbol	Description
—	—
B	With bracket

Precautions

Do not use this product as a safety valve.

[Definition of safety valves (JIS)
Valves used for ensuring pressure capacity and piping safety.]

Dimensions

