

# EX510 Gateway-type Serial Transmission System Plug-in Unit

## Series SQ1000



### How to Order Manifold

**SS5Q 1 3 - SB N 08 - D** □ - □ - **Q**

Manifold series  
1 SQ1000

SI unit output polarity  

—	Positive common
N	Negative common

Valve stations  

Symbol	Stations	Note
01	1 station	Double Wiring
⋮	⋮	
08	8 stations	

Note) Max. 16 stations  
(Special wiring specifications)

CE compliant

1(P), 3(R) port size  

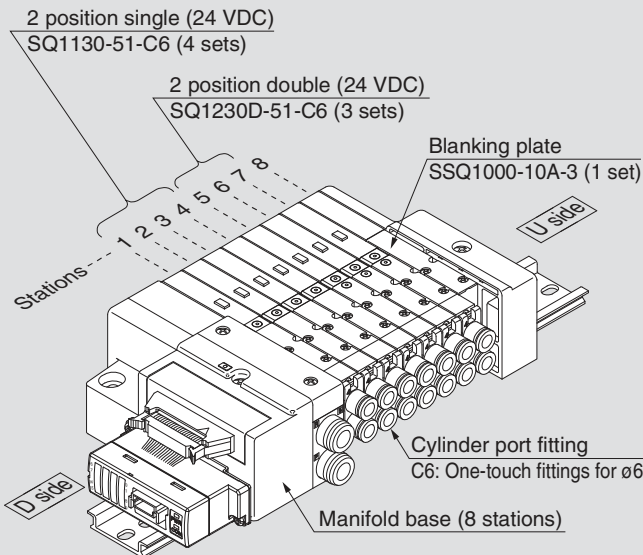
—	1(P), 3(R) port, One-touch fittings for ø8
00T	1(P), 3(R) port, One-touch fittings for ø5/16"

Option

—	None
02 to 16 <sup>(1)</sup>	DIN rail length specified
B <sup>(2)(3)</sup>	Back pressure check valve
K <sup>(4)</sup>	Special wiring specifications (Except double wiring)
N	With name plate (Side ported only)
R	External pilot specifications
S	Built-in silencer, direct exhaust

### How to Order Manifold Assembly

#### Example



SS5Q13-SB08-D ..... 1 set (SB kit 8-station manifold base part no.)  
 \*SQ1130-5-C6 ..... 4 sets (Single type part no.)  
 \*SQ1230-5-C6 ..... 3 sets (Double type part no.)  
 \*SSQ1000-10A-3 ..... 1 set (Blanking plate part no.)  
 → The asterisk denotes the symbol for assembly.  
 Prefix it to the part nos. of the solenoid valve, etc.  
 → Enter in order starting from the first station on the D side.

Add the valve and option part number under the manifold base part number.  
 When entry of part numbers becomes complicated, indicate by the manifold specification sheet.

Note 1) Specify DIN rail length with "D□" at the end.  
 (Enter the number of stations inside □.)  
 The number of stations that may be displayed is longer than the manifold number of stations.  
 Example: -D09

Note 2) When "B" is selected, a back pressure check valve is included in all stations of the manifold.  
 If the back pressure check valve is used only for the station that need it, then specify the station location in the manifold specification.  
 ("B" is not necessary)

Note 3) Since 4 port specification valves (5 (R1) and 3 (R2) are common) are used, back pressure cannot be prevented with dual 3 port valves.

Note 4) Specify "K" for wiring specification for cases below.  
 - All single wiring  
 - Single and double mixed wiring  
 - When there are stations which do not require wiring (e.g. single SUP spacer), specify the wiring specification in the manifold specification so that the number of the solenoids is 16 maximum. (Standard wiring specification is double wiring)

Note 5) For specifying two or more options, enter them alphabetically.  
 Example: -BKN

\* Refer to pages 42 to 46 and 52 to 54 for manifold option parts.

DIN rail mounting

#### SI Unit Part No.

Symbol	SI Unit Specifications	SI unit part no.
—	Positive common (NPN)	EX510-S002B
N	Negative common (PNP)	EX510-S102B

Refer to catalogue and the Operation Manual for the details of EX510 gateway-type serial transmission system.  
 Please download it via our website, <http://www.smc.eu>



### How to Order Valves

**SQ 1 1 3 0** - **5** - **1** - **C6** - **Q**

Series  
1 SQ1000

CE compliant

Seal

0	Metal seal
1	Rubber seal

• Type of actuation

1	2 position single (A)4 2(B) (R1)5 1 3(R2) (P)
2	2 position double (Double solenoid) <sup>(1)</sup> (A)4 2(B) (A)4 2(B) (R1)5 1 3(R2) (R1)5 1 3(R2) (P) (P) Metal seal Rubber seal
3	3 position closed centre (A)4 2(B) (R1)5 1 3(R2) (P)
4	3 position exhaust centre (A)4 2(B) (R1)5 1 3(R2) (P)
5	3 position pressure centre (A)4 2(B) (R1)5 1 3(R2) (P)
A(2)	4 position dual 3 port valve 4(A) 2(B) 1(P) 3(R)
B(2)	4 position dual 3 port valve 4(A) 2(B) 1(P) 3(R)
C(2)	4 position dual 3 port valve 4(A) 2(B) 1(P) 3(R)

Note 1) For double solenoid specification, the "function" symbol is "D".  
Note 2) Only rubber seal types are applicable.

Function

Symbol	Specifications
—	Standard type (0.4 W)
B	Quick response type (0.95 W)
D(1)	2 position double (Double solenoid specifications)
K	High pressure type (1 MPa, 0.95 W) [Applicable to metal seal only]
N(2)	Negative common
R(3)	External pilot specifications

• With/Without manifold block

—	M	MB (Note)
Without manifold block	With manifold block	With manifold block, built-in back pressure check valve
	 * Lead wire is not included.	 * Lead wire is not included.
• When ordering with manifolds are required.	For adding stations	

Note) Since 4 port specification valves (5 (R1) and 3 (R2) are common) are used, back pressure cannot be prevented with dual 3 port valves.

• Port plug mounting port

—	None
A	Port 4(A)
B	Port 2(B)

• Cylinder port

Symbol	Port size	Port location	
C3	With One-touch fittings for ø3.2	Side ported	
C4	With One-touch fittings for ø4		
C6	With One-touch fittings for ø6		
M5	M5 thread	Top <sup>(1)</sup> ported	
L3	With One-touch fittings for ø3.2		
L4	With One-touch fittings for ø4		
L6	With One-touch fittings for ø6		
L5	M5 thread		

Note 1) Can be changed to side ported configuration.  
Note 2) Refer to page 54 for the inch-size One-touch fittings.

• Manual override

—	B
Non-locking push type (Tool required)	Locking type (Tool required)

• Rated voltage

5 24 VDC

Note) Light/surge voltage suppressor is built-in.

Note 1) "D" is specified for 2 position double.  
Note 2) When SI unit output polarity is negative common, the valve common specification should be also be negative common.  
Note 3) Except dual 3 port valves.  
Note 4) When two or more symbols are specified, indicate them alphabetically.

Plug-in

Plug Lead

SQ 1000

SQ 2000

EX510

F kit

P kit

J kit

T kit

L kit

S kit

C kit

Manifold Options

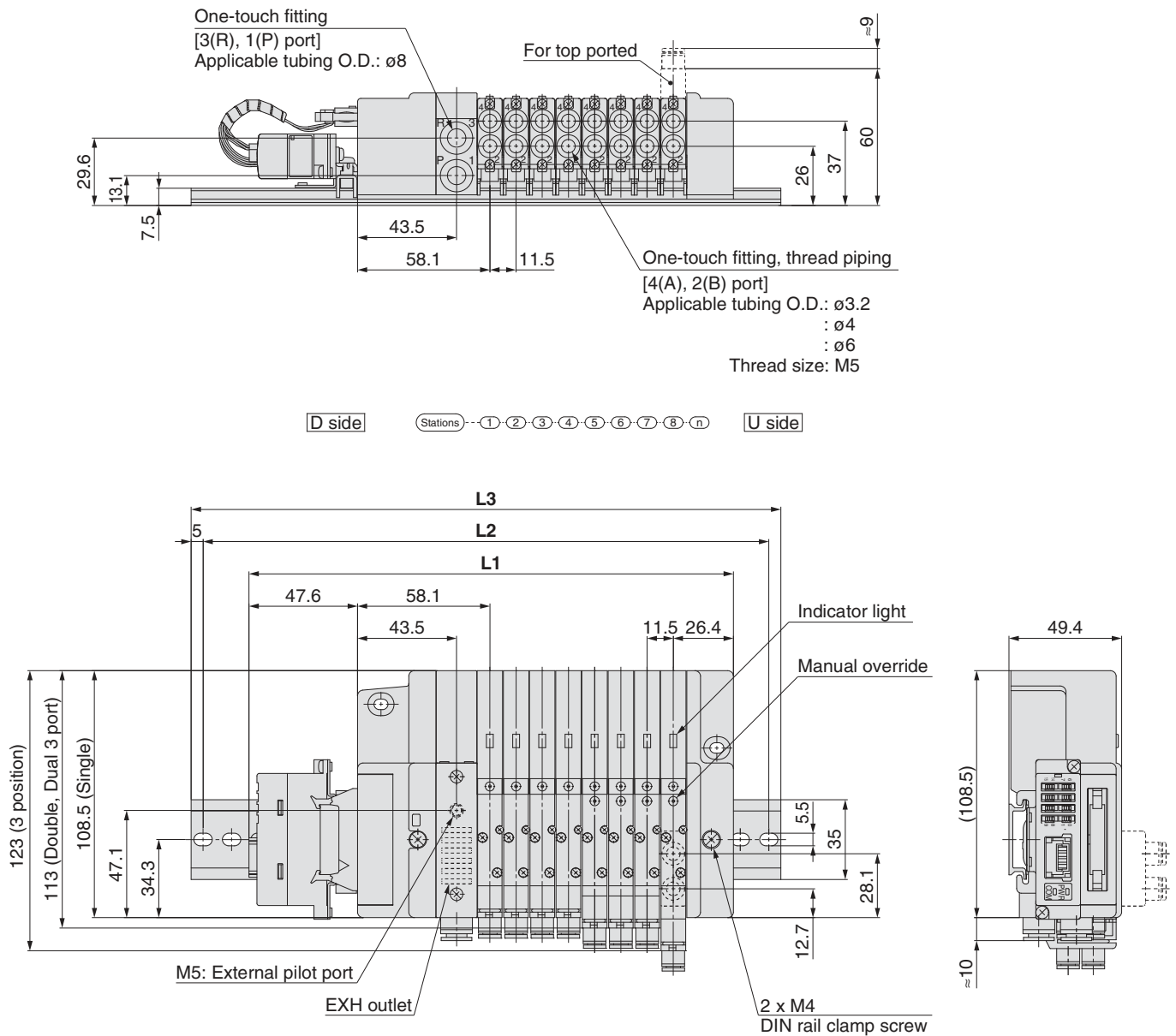
How to Increase Manifold Stations

Construction

Manifold Exploded View

# Series SQ1000

## Dimensions: SQ1000



### Dimensions [mm]

Formula:  $L1 = 11.5n + 120.5$  n: Stations (Maximum 16 stations)

L \ n	1	2	3	4	5	6	7	8	9	10	11	12	13	14	15	16
L1	132	143.5	155	166.5	178	189.5	201	212.5	224	235.5	247	258.5	270	281.5	293	304.5
L2	162.5	175	175	187.5	200	212.5	225	237.5	250	262.5	275	287.5	300	312.5	312.5	325
L3	173	185.5	185.5	198	210.5	223	235.5	248	260.5	273	285.5	298	310.5	323	323	335.5