

# Water Strainer

## Removal of foreign matter in water line

### Specifications

Model	Port size	Fluid *1	Proof pressure	Max. operating pressure	Mesh	Ambient and fluid temperature	Weight
WF300-□	Rc 1/4, 3/8, 1/2	Water	1.67 MPa	1.18 MPa	100 mesh	5 to 80 °C	0.29 kg
WF300-□-1-X204					70 mesh		
WF300-□-2-X204					50 mesh		
WF300-□-3-X204					25 mesh		

\*1: Cannot be used with deionised water.

### How to Order

WF300-02-□

Port size

02	Rc 1/4
03	Rc 3/8
04	Rc 1/2

Mesh

—	100 mesh
1-X204	70 mesh
2-X204	50 mesh
3-X204	25 mesh

Mesh:  
100/70/50/25 mesh



### Related Equipment

#### Water Regulator

WR110-□-X224/WR110-□-X215

Body material:  
Special brass

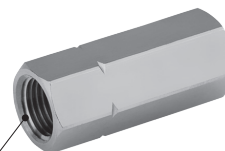


Port size  
 · Set pressure range (-X224):  
 0.08 to 0.39 MPa  
 Rc 1/8, Rc 1/4  
 · Set pressure range (-X215):  
 0.05 to 0.69 MPa  
 Rc 1/8, Rc 1/4  
 NPT 1/8, NPT 1/4

#### Check Valve

INA-14-290/XTO-674-□□

Body material: Brass



Port size: Rc 1/8

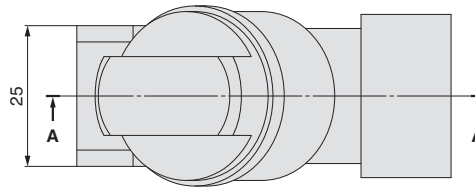
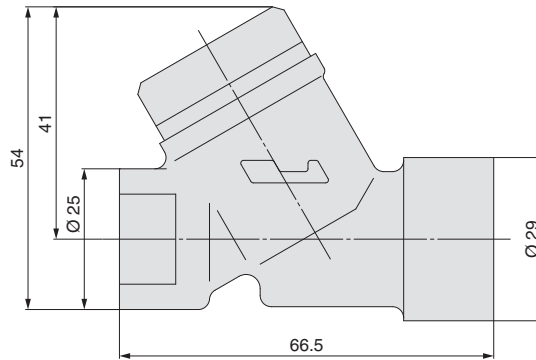
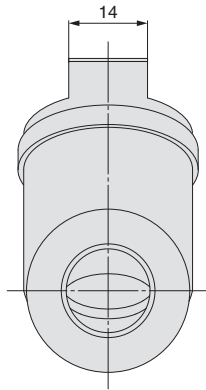


Port size: Rc 1/4, 3/8, 1/2

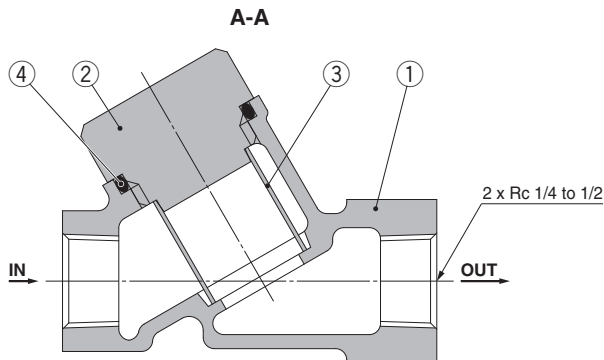
Series **WF300**

# Series WF300

## Dimensions



## Construction



### Component Parts

No.	Description	Material
1	Body	Bronze casted
2	Cap	Brass
4	O-ring	NBR

\*: Please contact SMC for O-rings which are made of fluorine-based materials.

### Replacement Parts

No.	Description	Material	Part number			
			100 mesh	70 mesh	50 mesh	25 mesh
3	Element	Stainless steel	11366	11366-1-1	11366-2-1	11366-3-1

## SMC Corporation

SMC CORPORATION  
 Akihabara UDX 15F, 4-14-1, Sotokanda, Chiyoda-ku, Tokyo 101-0021, JAPAN  
 Phone: 03-5207-8249 FAX: 03-5298-5362  
 SMC CORPORATION All Rights Reserved

### European Marketing Centre (EMC)

Zuazobidea 14, 01015 Vitoria  
 Tel: +34 945-184 100 Fax: +34 945-184 124  
 URL <http://www.smc.eu>