

Pressure Gauge for General Purpose/ With Limit Indicator

G36/GA36 Series

RoHS



G36-10-01

- Be sure to read the precautions on page 891 for selection and mounting.

Standard Specifications

Model		G36	GA36
Type		Back side thread	Vertical side thread
Port size ⁽¹⁾		R 1/8 (Option M: With M5 female thread)	R 1/8
Fluid ^{(2) (4)}		Air	
Indication precision ⁽⁵⁾		±3% F.S. (Full span)	
Material	Case (Surface treatment)	Rolled steel (Electrodeposition coating black)	Stainless steel (Black melamine painted)
	Clear cover ⁽³⁾	Polycarbonate (Part no.: G36-00-00-4)	Polycarbonate (Part no.: G36-00-00-3)
	Stud (Surface treatment)	Aluminum die-casted (Black disulfide molybdenum coat treated)	Brass
	Bourdon tube	Brass	
Weight (kg)		0.04	0.05

Note 1) When installing a pressure gauge, be careful not to fasten too tight. Excessive tightening will result in damage. Use a pipe tape for sealing.

Note 2) Not applicable to water as fluid because its stud is made from aluminum die-casted. Water may cause corrosion and block the air passage.

Note 3) Clear cover: G36-00-00-4 is not compatible with G36-00-00-3.

Note 4) Avoid freezing as this may cause a malfunction.

Note 5) The guaranteed temperature range is 23°C ±5°C.

Model (Standard)

Model	Pressure range ⁽¹⁾		Indication unit	Connection thread	Note
	MPa				
G36-2-01	0 to 0.2		MPa	R 1/8	—
G36-4-01	0 to 0.4				
G36-7-01	0 to 0.7				
G36-10-01	0 to 1.0				
GA36-10-01	0 to 1.0				

Note 1) Do not apply pressure more than the maximum display pressure. This will cause a malfunction.

Model (Made to Order)

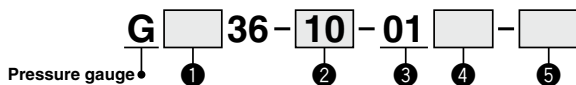
Other versions of this unit can be made on a Made-to-Order basis. Please consult with SMC for details, as delivery times may be extended.

Model	Pressure range ⁽¹⁾		Indication unit	Connection thread	Note
	MPa	psi			
G36-P2-01-X30 ⁽²⁾	0 to 0.2	0 to 30	MPa, psi	R 1/8	—
G36-P10-01-X30 ⁽²⁾	0 to 1.0	0 to 150			
G36-15-01	0 to 1.5	—	MPa		

Note 1) Do not apply pressure more than the maximum display pressure. This will cause a malfunction.

Note 2) Under the New Measurement Law, products for overseas use only (SI unit type for use in Japan).

How to Order



		Symbol	Description	①	
				G36	GA36
				Back side thread	Vertical side thread
		+			
②	Max. display pressure	2	0.2 MPa	●	●
		4	0.4 MPa	●	●
		7	0.7 MPa	●	●
		10	1.0 MPa	●	●
		15	1.5 MPa	●	●
		P2 ⁽¹⁾	0.2 MPa, 30 psi	○ ⁽²⁾	○ ⁽²⁾
		P4 ⁽¹⁾	0.4 MPa, 60 psi	○ ⁽²⁾	○ ⁽²⁾
		P7 ⁽¹⁾	0.7 MPa, 100 psi	○ ⁽²⁾	○ ⁽²⁾
P10 ⁽¹⁾	1.0 MPa, 150 psi	○ ⁽²⁾	○ ⁽²⁾		
P15 ⁽¹⁾	1.5 MPa, 220 psi	○ ⁽²⁾	—		
		+			
③	Connection thread	01	R 1/8	●	●
		+			
④	Option	Nil	—	●	●
		M ⁽³⁾	With M5 (Female thread)	●	—
		+			
⑤	Special specification ^{Note 4)}	Nil	—	●	●
		X2	Stud parts nickel plated	— ⁽⁶⁾	●
		X4	Oil-free (Wetted parts degrease washing)	●	●
		X30	Both MPa and psi	○ ⁽²⁾	○ ⁽²⁾

Note 1) This symbol must be used with Special specification "X30."

Note 2) Under the New Measurement Law, products for overseas use only (SI unit type for use in Japan)

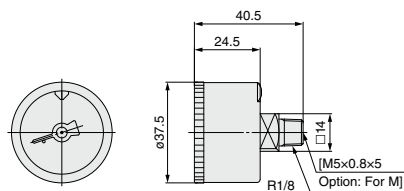
Note 3) To use the pressure gauge with M5 (female thread), attach the joint when piping the tube. For combinations with the special specification products, please consult SMC separately.

Note 4) Wetted parts stainless steel specifications are not available.

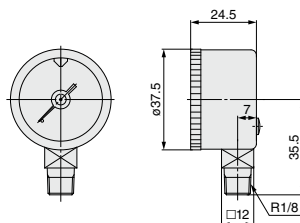
Note 5) Cover ring assembly is not available.
 Note 6) When necessary, please contact SMC.

Dimensions

G36-□□-01(M)



GA36-□□-01



G

GS

PPA