

Pressure Gauge for General Purpose Series G33/GA33



- Be sure to read the precautions on page 663 for selection and mounting.

Standard Specifications

| Model | | G33 | GA33 |
|---------------------------------|---|---------------------|----------------------|
| Type | | Back side thread | Vertical side thread |
| Port size ⁽¹⁾ | | R 1/8 | |
| Fluid ⁽²⁾ | | Air | |
| Indication precision | | 3% F.S. (Full span) | |
| Material | Case | Stainless steel | |
| | Clear cover | Glass | |
| | Stud | Brass | |
| | Bourdon tube | Brass | |
| Applicable model | IP5000, IP6000, IR1000, IT1000, ARM2500, 3000 | | |

Note 1) When mounting a pressure gauge, use caution not to tighten excessively. Excessive tightening will cause product to be damaged. Use a pipe tape for sealing. Recommended tightening torque: R 1/8: Set between 7 and 9 N·m.

Note 2) When using other fluids, please consult with SMC for fluid compatibility information concerning corrosive potential.

Model (Standard)

| Model | Pressure range ⁽¹⁾ | | Indication unit | Connection thread | Note |
|------------|-------------------------------|-----|-----------------|-------------------|------|
| | MPa | psi | | | |
| G33-2-01 | 0 to 0.2 | — | MPa | R 1/8 | — |
| G33-3-01 | 0 to 0.3 | — | | | |
| G33-4-01 | 0 to 0.4 | — | | | |
| G33-6-01 | 0 to 0.6 | — | | | |
| G33-10-01 | 0 to 1.0 | — | | | |
| GA33-2-01 | 0 to 0.2 | — | | | |
| GA33-4-01 | 0 to 0.4 | — | | | |
| GA33-7-01 | 0 to 0.7 | — | | | |
| GA33-10-01 | 0 to 1.0 | — | | | |

Note 1) Do not apply pressure more than the maximum display pressure. This will cause a malfunction.

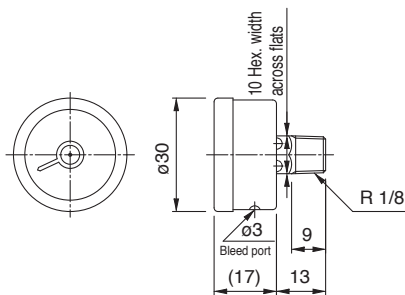
Model (Made to Order)

| Model | Pressure range ⁽¹⁾ | | Indication unit | Connection thread | Note |
|-----------------|-------------------------------|----------|-----------------|-------------------|--|
| | MPa | psi | | | |
| G33-2-01-X2 | 0 to 0.2 | — | MPa | R 1/8 | X2: Stud parts electroless nickel plated |
| G33-3-01-X2 | 0 to 0.3 | — | | | |
| G33-4-01-X2 | 0 to 0.4 | — | | | |
| G33-6-01-X2 | 0 to 0.6 | — | | | |
| G33-10-01-X2 | 0 to 1.0 | — | | | |
| GA33-2-01-X2 | 0 to 0.2 | — | | | X2: Stud parts nickel plated |
| GA33-4-01-X2 | 0 to 0.4 | — | | | |
| GA33-7-01-X2 | 0 to 0.7 | — | | | |
| GA33-10-01-X2 | 0 to 1.0 | — | | | |
| G33-10-01-X4 | 0 to 1.0 | — | | | |
| GA33-P10-01-X30 | 0 to 1.0 | 0 to 150 | MPa, psi | R 1/8 | — |

Note 1) Do not apply pressure more than the maximum display pressure. This will cause a malfunction.

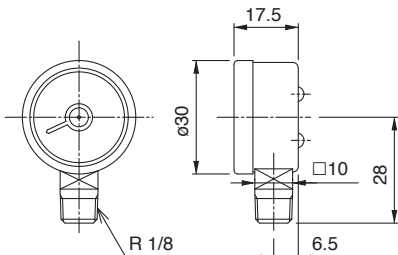
Dimensions

G33



G33-□□-01

GA33



GA33-□□-01

How to Order

G **□** **33** - **10** - **01** - **□**

• **Pressure gauge**

• **Frame type**

| Symbol | Type |
|--------|----------------------|
| Nil | Back side thread |
| A | Vertical side thread |

• **Model**

| Symbol | Outside diameter |
|--------|------------------|
| 33 | 30 |

• **Connection thread**

| Symbol | Size |
|--------|-------|
| 01 | R 1/8 |

• **Max. display pressure**

| Symbol | Unit |
|------------------------|------------------|
| 2 | 0.2 MPa |
| 3 | 0.3 MPa |
| 4 | 0.4 MPa |
| 6 | 0.6 MPa |
| 7 | 0.7 MPa |
| 10 | 1.0 MPa |
| P10 ^{(1) (2)} | 1.0 MPa, 150 psi |

• **Option**

| Symbol | Specifications |
|--------|--|
| Nil | — |
| X2 | Stud parts electroless nickel plated |
| X4 | Oil-free (Wetted parts degreasing washing) |
| X30 | Both MPa and psi |

Note 1) This symbol must be used with Option "X30."
Note 2) Compatible with GA33 type only

Note 1) X3 (Wetted parts stainless steel) specifications is not available.
Note 2) Please contact SMC separately for pressure range of GA33 between 0